

# FAUNA STENT™

## Canine Tracheal Stent

**M.I.Tech**  
Expanding Quality of Life

## Revolution of Tracheal collapse treatment for small animal

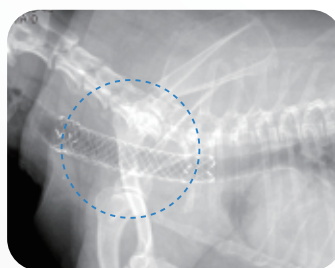
Now it is possible to correct Tracheal collapse cases using M.I.Tech Fauna Stent

For the last 2 years, our products have proven to have excellent clinical results

1. No granulation tissue
2. 100% success rate from clinical results
3. Simple & Easy surgical procedure by radiopaque markers
4. Repositioning and excellent flexibility
5. Optimized radial force
6. Minimized foreshortening for accurate positioning
7. Good resistance to wire fracture from frequent movement
8. Customized various size (length and diameter) possible for any size canine



Before



After

<Information given by Royal Medical Center>

Symptoms: coughing, fainting, difficulty in breathing, Exercise intolerance, obesity. 10years old, male, Yorkshire terrier (Weight 3.2kg), before/after picture (Stent : 10mm diameter /6cm long stent)

## FAUNA STENT™

### Tracheal Stent

#### Non-covered type



#### Partial-covered type



### Kinking-Resistance Designed Delivery Device



### Indication

#### ■ Tracheal collapse

- No more curative effect by medication therapy treatment
- Hard to proceed surgical outside-ring technique procedure
- Severe difficulty in breathing

#### ■ Early progressive tracheal collapse

- Controlling effect by early surgical procedure

### Direction

- Pre/post medication for 7days
- Best result after reduction of body weight
- After Laryngoparalysis-contraindication stenting is not recommended
- When tracheitis muscle redundancy-contraindication is noticed procedure is not recommended

# FAUNA STENT™

## Canine Tracheal Stent

### Characteristics

- Material: Nitinol: Nickel / Titanium Alloy ※Membrane: Medical-grade silicone
- Recapturable
- Excellent flexibility
- Radiopaque Marker: located at both ends of stent & both end of membrane
- No granulation by minimizing stimulus (clinical study result for 2+ years of implanted stent)
- No fracture & collapse of the stent due to low-axial force

### Specifications

Model	Stent		Delivery Device	
	Diameter (mm)	Length (mm)	Diameter (Fr)	Usable Length (mm)
TPA-06-040-050	6	40		
TPA-06-050-050	6	50		
TPA-06-060-050	6	60		
TPA-06-070-050	6	70		
TPA-06-080-050	6	80		
TPA-06-090-050	6	90		
TPA-06 - 100-050	6	100		
TPA-08-040-050	8	40		
TPA-08-050-050	8	50		
TPA-08-060-050	8	60	10.2	500
TPA-08-070-050	8	70		
TPA-08-080-050	8	80		
TPA-08-090-050	8	90		
TPA-08 - 100-050	8	100		
TPA - 10-040-050	10	40		
TPA - 10-050-050	10	50		
TPA - 10-060-050	10	60		
TPA - 10-070-050	10	70		
TPA - 10-080-050	10	80		
TPA - 10-090-050	10	90		
TPA - 10-100-050	10	100		

Model	Stent		Delivery Device	
	Diameter (mm)	Length (mm)	Diameter (Fr)	Usable Length (mm)
TNA-06-040-050	6	40		
TNA-06-050-050	6	50		
TNA-06-060-050	6	60		
TNA-06-070-050	6	70		
TNA-06-080-050	6	80		
TNA-06-090-050	6	90		
TNA-06 - 100-050	6	100		
TNA-08-040-050	8	40		
TNA-08-050-050	8	50		
TNA-08-060-050	8	60	10.2	500
TNA-08-070-050	8	70		
TNA-08-080-050	8	80		
TNA-08-090-050	8	90		
TNA-08 - 100-050	8	100		
TNA - 10-040-050	10	40		
TNA - 10-050-050	10	50		
TNA - 10-060-050	10	60		
TNA - 10-070-050	10	70		
TNA - 10-080-050	10	80		
TNA - 10-090-050	10	90		
TNA - 10-100-050	10	100		

\* M.I.Tech stent is the first Canine Tracheal Stent which is authorized by Korea Animal and Plant Quarantine Agency (#113-1 and #113-2)